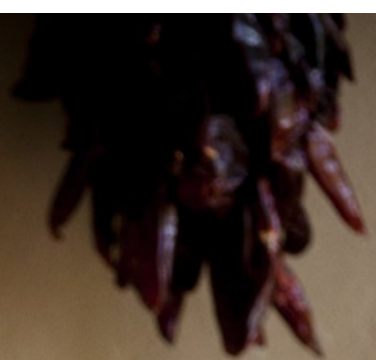


SANTAFE
ART TOURS

corporate group
walking tours + team
building activities



A NOTE FROM THE FOUNDER



Hello!

Thank you so much for considering Santa Fe Art Tours in your search for the perfect activity for your private group tour. Whether your group is here for a workshop, a retreat, or a corporate event, we are excited about creating an awesome experience for them.

Art is an incredible tool for encouraging creativity and skill building. Our tours are designed to be fun and interactive, and they feature activities that are awesome for bonding and team building. Your group will not only learn about the art and history of Santa Fe – they'll also work together to practice skills like visual analysis, interpretation, and critical thinking.

We understand the difficulties in organizing a group activity, so we're hoping to make this experience easy and enjoyable for you.

Here, you'll find a summary of each of our offerings with a brief outline of the most important details. We've included our booking and cancellation terms for easy reference.

And because we know you probably also have to feed people, we've also included a list of some of our favorite restaurants, cafes, and bars.

We can't wait to work with you!

Sincerely,

Elaine Ritchel
Santa Fe Art Tours

"Truly the best leadership development experience I've had in my 15-year career. Can't wait to come back and do it again."

- L.S., participant in a team-building tour for Bank of America



TABLE OF CONTENTS

[Canyon Road Arts District Tour](#)

[Art Gallery Tour + Chocolate Elixir Tasting](#)

[Santa Fe Plaza Art + Architecture Tour](#)

[Transportation + Hotel Pickup \(Add On\)](#)

[Booking + Cancellation Terms](#)

[Frequently Asked Questions](#)

[Restaurant Recommendations](#)

[Contact Information](#)



CANYON ROAD ARTS DISTRICT TOUR

Our Canyon Road Arts District tour offers the perfect blend of culture, creativity, and conversation through curated visits to some of the most memorable galleries in Santa Fe. The serene ambiance of Canyon Road provides a tranquil setting for your group to relax, unwind, and connect with one another. This tour goes beyond sightseeing to foster a sense of camaraderie and collaboration through activities that encourage open communication and stimulate creative thinking. Strengthen relationships, encourage teamwork, and inspire fresh perspectives all while learning about local art and culture.

Duration:

2 hours

Available between 10 am and 5 pm Tuesday-Saturday. Latest start time is 3 pm.

Price:

\$99 per person

Inclusions:

Lead guide, assisting or additional guide if necessary, gratuity, bottled water, New Mexico Gross Receipts Tax.

Group size:

Minimum 3 people (or equivalent price)

Maximum 25 people per tour, depending on availability. For larger groups, multiple time slots can be booked.

Meeting location:

Wiford Gallery, 403 Canyon Road, or Morning Star Gallery, 513 Canyon Road

Walking distance:

Approximately 0.5 miles. End at or near Vivo Contemporary, 725A Canyon Road



ART GALLERY TOUR + CHOCOLATE ELIXIR TASTING

Our Art Gallery Tour & Chocolate Elixir Tasting combines art and culture with a local foodie experience. On this tour, your group will wander inspiring sculpture gardens, marvel at cutting-edge contemporary art, and indulge in tantalizing chocolate elixirs that stimulate the senses at one of the most celebrated chocolate stops in Santa Fe: Kakawa Chocolate House. As with all of our tours, this walking tour fosters a sense of camaraderie and collaboration through activities that encourage open communication and stimulate creative thinking. Conversation is key as we engage your group to look at art with an analytical eye.

Duration:

2 hours

Available between 10 am and 5 pm Tuesday-Saturday. Latest start time is 3 pm.

Price:

\$105 per person

Inclusions:

Lead guide, assisting or additional guide if necessary, gratuity, bottled water, small chocolate elixir (sipping chocolate) for each person, New Mexico Gross Receipts Tax.

Group size:

Minimum 3 people (or equivalent price)

Maximum 15 people per tour. For larger groups, multiple time slots can be booked.

Meeting location:

Nedra Matteucci Galleries, 1075 Paseo de Peralta

Walking distance:

Approximately 0.75 miles. End at Kakawa Chocolate House, 1050 Paseo de Peralta



SANTA FE PLAZA ART + ARCHITECTURE TOUR

The perfect introduction to Santa Fe, our Santa Fe Plaza Art + Architecture walking tour is a fun and relaxed walk through Santa Fe's historic Plaza area. Your group will experience must-see art galleries, discover enchanting courtyards, and learn the stories behind some of Santa Fe's iconic architectural landmarks. During the tour, stop for beautifully hand-painted chocolate truffles and get insider tips on what to do in Santa Fe. As on all of our tours, we'll go beyond sightseeing and encourage your group to connect and converse while we explore local art and culture.

Duration:

2 hours

Available between 10 am and 5 pm Tuesday-Saturday. Latest start time is 3 pm.

Price:

\$105 per person

Inclusions:

Lead guide, assisting or additional guide if necessary, gratuity, bottled water, hand-painted chocolate truffle for each person, New Mexico Gross Receipts Tax.

Group size:

Minimum 3 people (or equivalent price)

Maximum 25 people per tour, depending on availability. For larger groups, multiple time slots can be booked.

Meeting location:

Santa Fe Plaza bandstand

Walking distance:

Approximately 0.75 miles. End at or near St Francis Cathedral, 131 Cathedral Place



TRANSPORTATION + HOTEL PICKUP (ADD-ON)

Typically, our tours begin at a designated meeting location where your Santa Fe Art Tours guide will be waiting for the group.

If you would rather have us take care of coordinating and booking transportation and getting your group to the walking tour location, we offer an option to have our guide meet your group at your hotel with private transportation in a comfortable coach provided by our local transportation partner.

The coach will be fully available to your group for the duration of the tour.

All prices below are per group and are in addition to tour prices.

14 Passenger Mini Coach (13 guests + guide)
\$1075

28 Passenger Coach (27 guests + guide)
\$1250

Prices include:

Guide arrival at your hotel 30 minutes before the scheduled tour time, hotel pick-up with guide, hotel drop-off after the tour, private coach and driver, driver gratuity, New Mexico Gross Receipts Tax

Scheduling example:

If your Canyon Road walking tour is scheduled from 10 am to 12 pm, the guide will be at your hotel at 9:30 am. The coach will depart at 9:45 am, and the coach will arrive on Canyon Road by 10 am.

The tour will end at 12 pm, and the coach will drop the group off at your hotel by 12:30 pm.



BOOKING + CANCELLATION TERMS

Payment for tours is collected at the time of booking.

We accept payment by CC, ACH, and check.

Private group tours carry a tiered cancellation policy:

Bookings cancelled up to 30 days before the tour date will receive a full refund, 29-15 days before the tour 75% refund; 14-7 days before the tour 50% refund; less than 7 days before the tour date no refund.

If adding the Transportation + Hotel Pickup option:

A non-refundable 25% deposit is required at the time of booking. Payment in full is required 45 days before the tour date.

The transportation add-on is refundable less the deposit up to 30 days before the tour date. Cancellations less than 30 days before the tour are non-refundable.



FREQUENTLY ASKED QUESTIONS

Can the tour be customized?

Our walking tours are designed to suit a wide range of groups, and most groups do not require customization.

However, if you have specific goals, outcomes, or concepts that you are focusing on during your retreat or workshop and would like to incorporate those into the tour, we can definitely work with you on that! Customizations are subject to an additional planning fee. Please contact us to discuss.

Our group has limited time. Can the duration of the tour be shortened?

Our walking tours typically run 2 hours, which is the perfect amount of time for most groups. This timeframe will also allow your group to get the most out of the experience.

We can shorten the tour to 1.5 hours if necessary, however, pricing for 1.5 hour tours is the same as the price for a 2 hour tour, since it requires the same amount of time for us to plan and schedule.

We aren't sure how many people will attend the tour. How should we go about booking?

In cases like this, we always recommend booking for the maximum anticipated group size, so that we can prepare for your group and schedule guides accordingly. Final numbers can be adjusted until two weeks before the tour date. After that, any further adjustments will be subject to our cancellation policy.



RESTAURANT RECOMMENDATIONS

Canyon Road Restaurants

The Teahouse | lunch
The Compound | lunch & dinner
El Farol | happy hour & dinner
Geronimo | dinner

Plaza Area Restaurants

La Boca | lunch & dinner
Santacafe | lunch & dinner
The Shed | lunch & dinner
La Casa Sena | lunch & dinner
TerraCotta Wine Bistro | dinner
Coyote Cafe | dinner
Joseph's Culinary Pub | dinner

Plaza Area Coffee

Iconik Coffee
Collected Works Bookstore & Coffeehouse
35° North Coffee

Plaza Area Drinks

Gruet Winery Tasting Room
VARA Winery & Distillery
Los Poblanos Farm Shop & Bar Norte
Secreto Lounge
Tonic



Contact Us

Santa Fe Art Tours

505 985 5298

groups@santafearttours.com

santafearttours.com

SANTA FE
ART TOURS